

Wyeforce Model Tow Post for Towing. page One

By Alan Rose. www.alansboats.co.uk

The modification to the towing post to enable it to be used for proper towing is based on the unit 'Paul Freshney' built and describes in the Model Slipway "Wyeforce" Kit review in Model Boats Magazine December 1996

The brass tube used for the main central unit is approximately the same diameter as the white metal and wood dowel supplied (in the kit) being 5/8" OD. I used the KS Metals brass tube No: KS143 with the Outer tube fixed to the hull being KS: 144 (21/32" OD), the 143 being A sliding fit inside 144. A bolt was used to lock the two tubes together. The supplied white metal cross pieces (shown dark blue) were used, but I First drilled a hole through them for the clamping threaded rod (red).


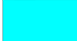

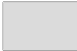





The two outer vertical posts can either be 'as supplied' or made from the 143 brass tube.

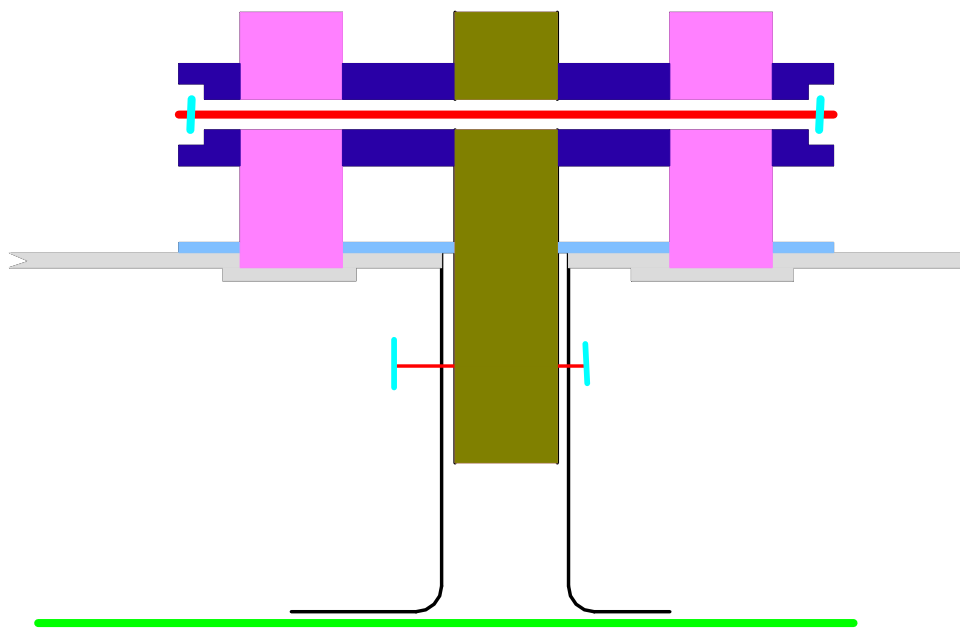
The complete assembly was fixed together with slow setting (2 hr) Araldite, By using slow setting adhesive it is possible to check everything is aligned Before the adhesive sets. Once set and cleaned up the actual swinging part of the tow post was fitted as normal.

The lower (144) brass tube is splayed at the bottom end and glass fibre used To fix to the hull, I also reinforced the deck where the tube passes through it, by adding a wide deck beam across the hull.

The two outer vertical tube simply drop into holes in the deck, which have blanking pieces underneath.

To tow I only use the main central post (brass tube) and use a cord passed round The tube with a large loop, the swinging arm is left to move freely.

	Brass Tube		Metal Nuts
	White Metal		Plastic Deck
	White Metal Cross Pieces		Brass Tube Fixed to Hull
	Hull		Plastic Plate on Deck
	Threaded Metal Rod		



Wye force Model Tow Post for Towing. page two

By Alan Rose. www.alansboats.co.uk

Coloured Drawing of Tow Post Layout.

Not to Scale.