

Customising link buttons on Internet explorer 5.x

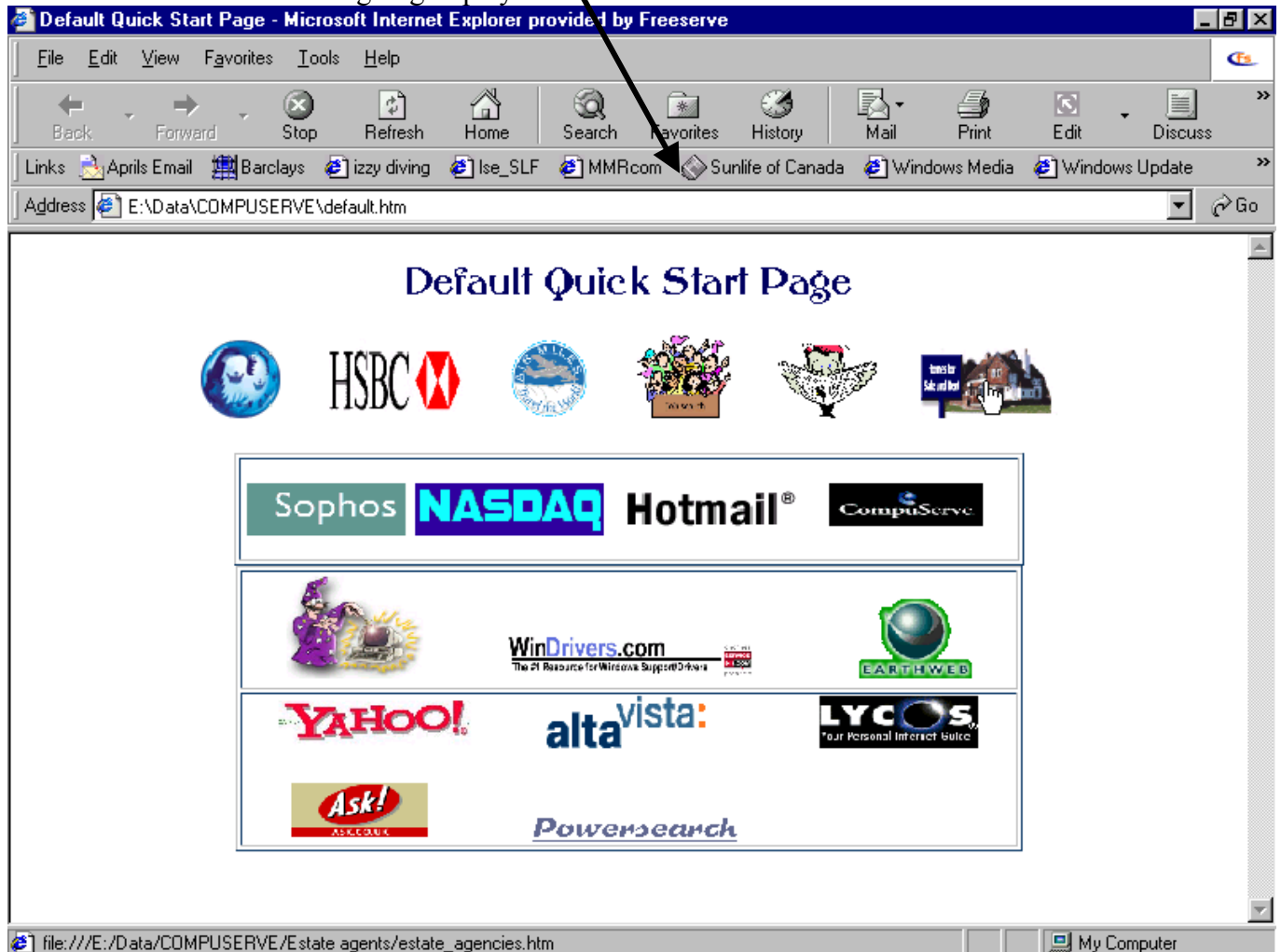
The boffins at Microsoft did this to make it really easy for us to access the sites we go to regularly by using the buttons instead of using favourites etc.

Launch Internet Explorer

If you get the dial up network connection box (DUN) click cancel until it lets you work off line..

Here is my default start page:

These are the buttons we are going to play with

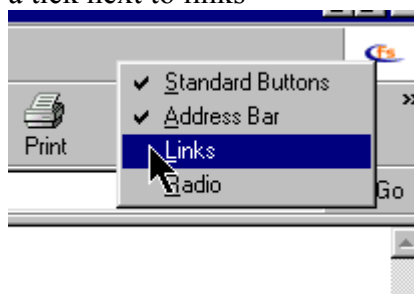


Ok. Assuming your powersearch page is now saved in the following location:

C:\data\internet\powersearch.html

What we need to do is the following.

If you cannot see the buttons line then Right click the menu bar (Internet Explorer) and make sure there is a tick next to links

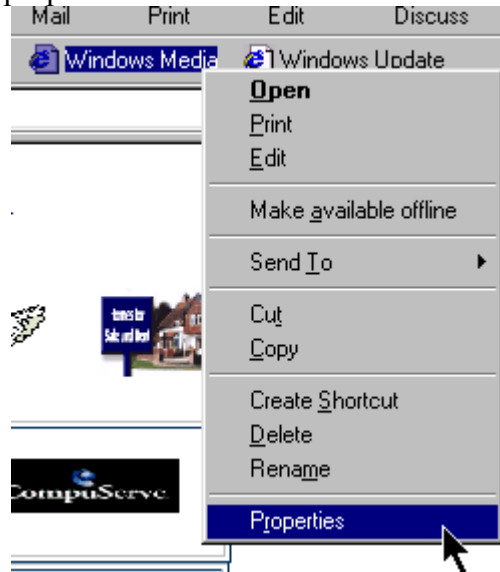


This will now display the links bar; you should get a variety of pre-programmed buttons. We will now change one of these buttons to our powersearch page.

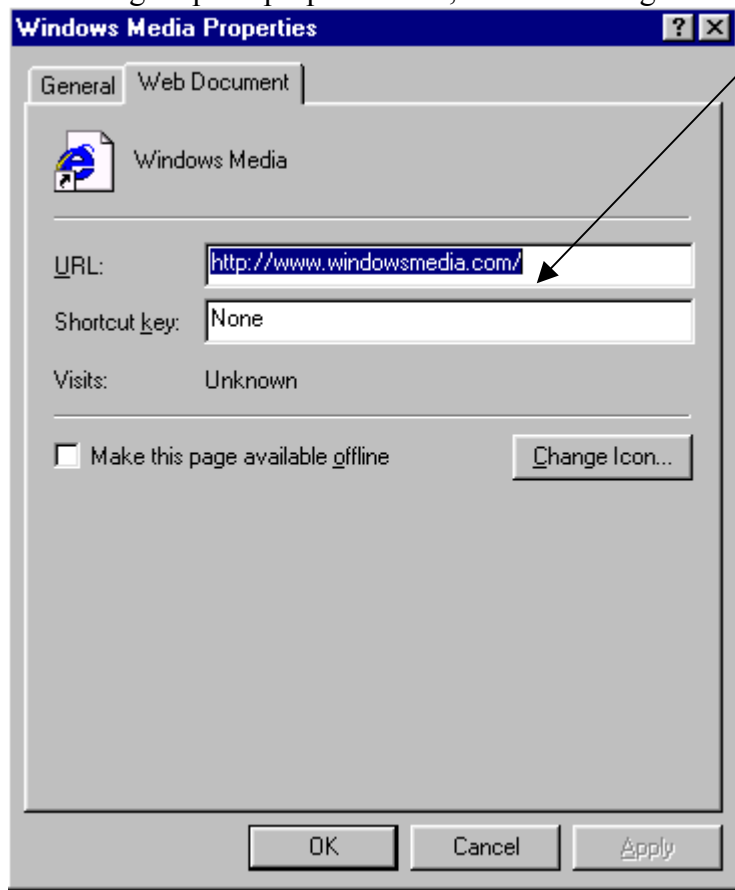
I have selected a button called windows media (this is a pre programmed button to www.windowsmedia.com).

Step 1

Right click the button and select properties



You will get up the properties box; we are looking for the URL field



Delete the contents of this box and replace it with c:\data\internet\powersearch.htm

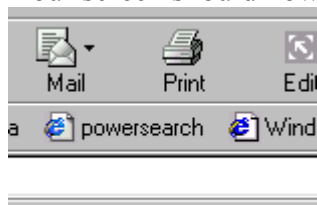
A quick way of doing this instead of typing all of that is hit the start & E keys simultaneously, this will launch windows explorer and browse for the file. When you have found it then copy the address line and paste it in to this window.

If you want to give it a different icon, you can hit the button, this only gives a handful of options, if you change the file name in the popup window to moricons.dll you will get a whole load more, alternatively browse to C:\Program Files\Plus!\Themes - you will see all of your themes and icons here. Click ok when done.

Our link to windowsmedia.com has now been redirected to a Local Offline page: powersearch. We need to rename the button from windows media to powersearch.

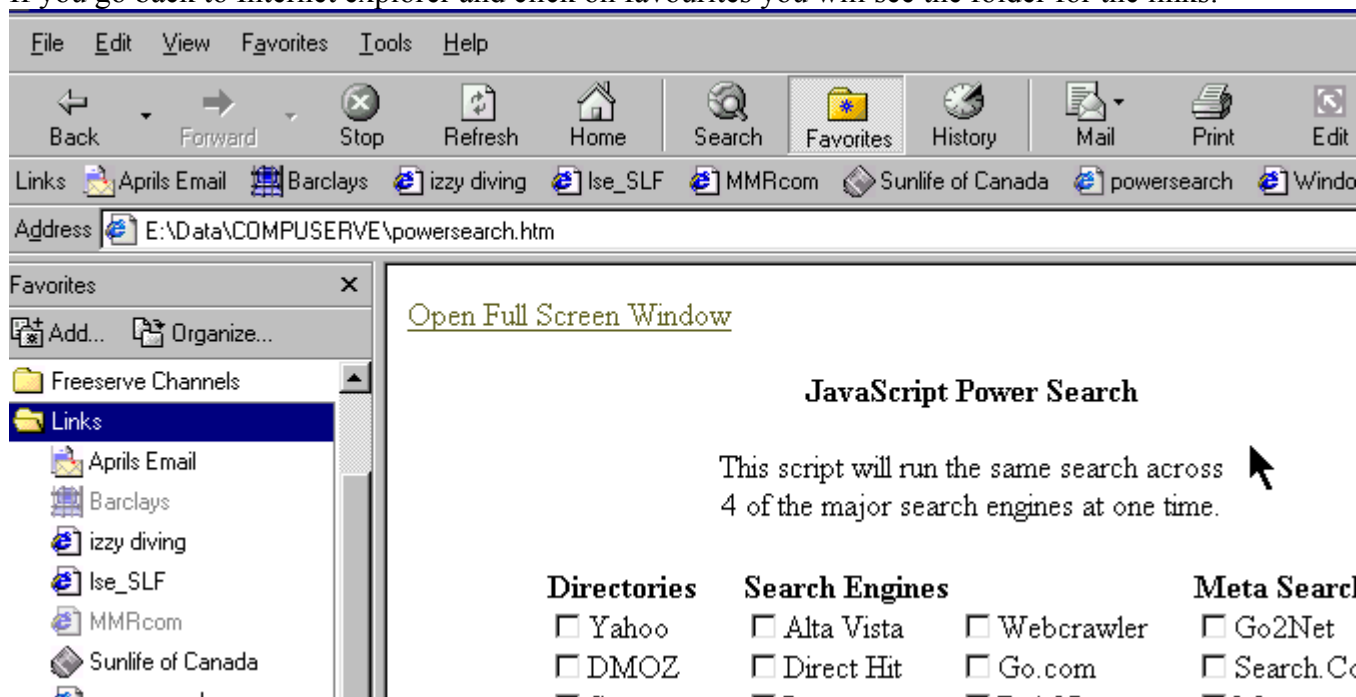
Right click the button and select rename
Type powersearch and click OK,

Your screen should now have this button



If you click on it, it should take you to the off line powersearch page. You can enter the criteria and it will only work when you are ON LINE, it will not force a connection to the Internet.

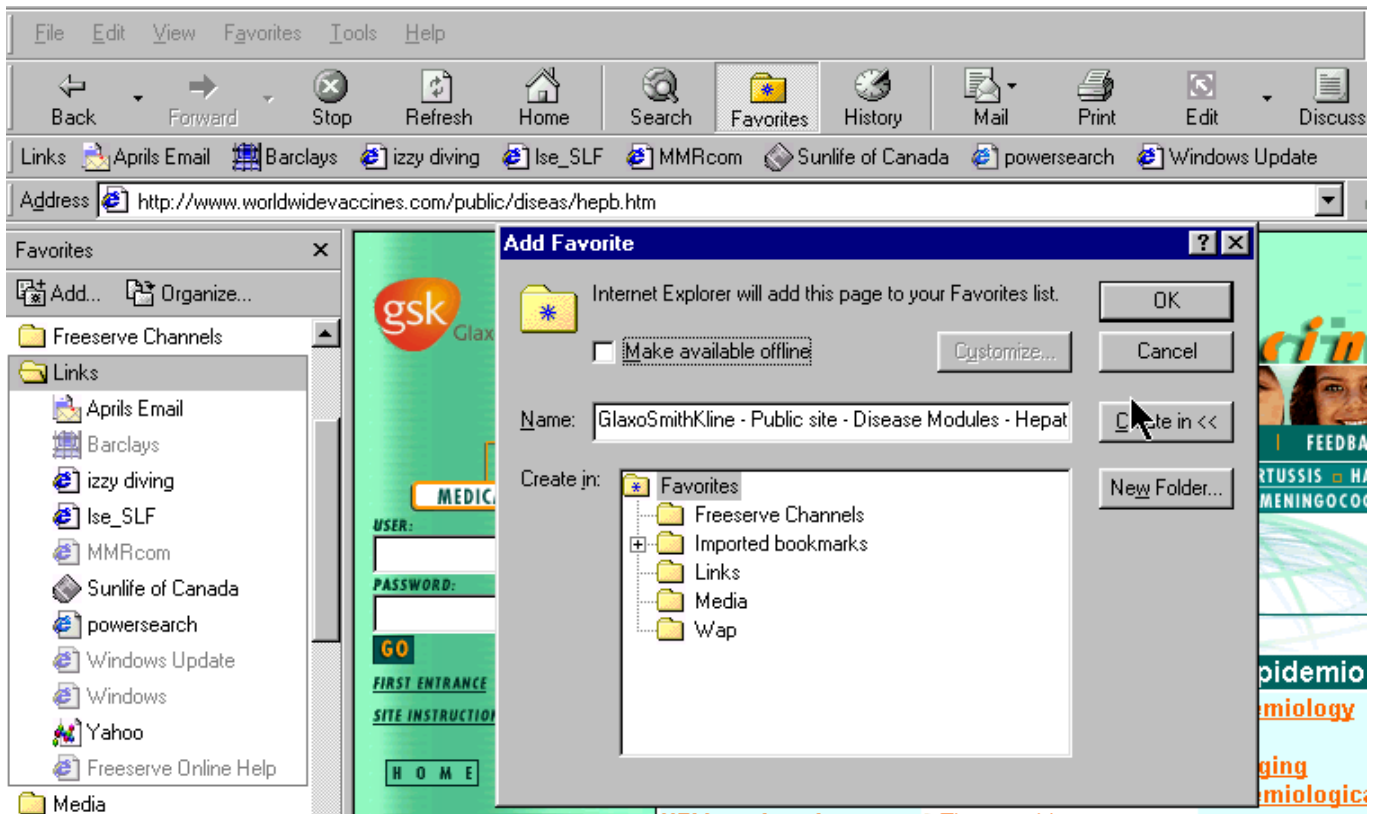
If you go back to Internet explorer and click on favourites you will see the folder for the links:



If you expand this you will see all of the other buttons you have pre programmed on your system, needless to say you can drag and drop them along their tool bar!

If you want to you can add pages to here from on line sources by opening the page you want to link to then selecting the add button

If you are on the enemy's website and want a quick link to Dr Death, click Favourites, click add,



select the links folder then click OK. The make available off line option enables up to three pages depth from the current to be stored locally on your hard drive, this takes up space if you do it often, so beware.