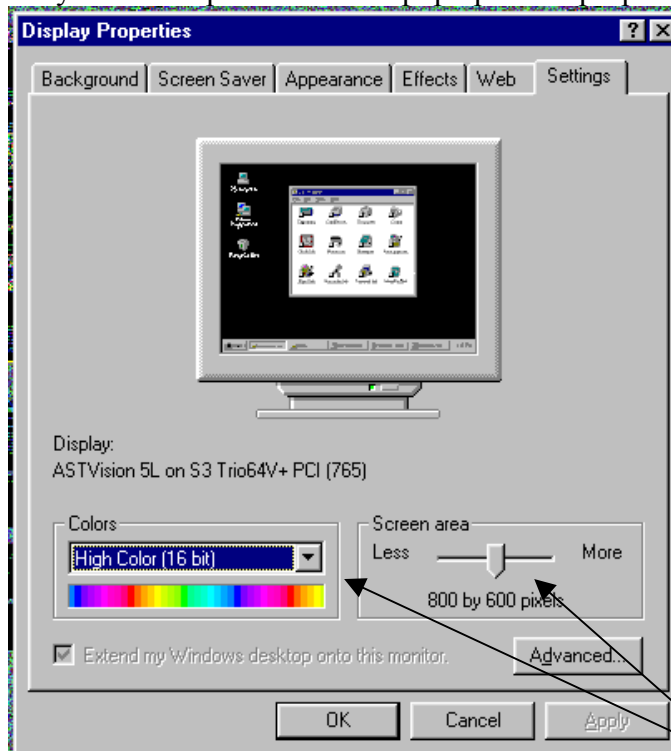


Customising your desktop

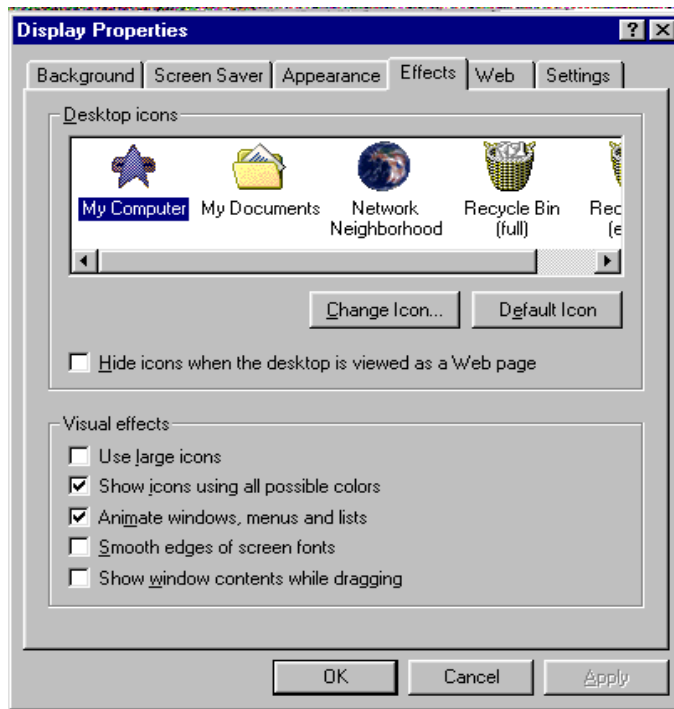
1. Changing the wallpaper:

If you have a picture in either .bmp or .jpg extension that you want to display as the backdrop on your computer there are a number of ways to do this.

- (a) You know where you have put the image (e.g. c:\data\pictures\eaglehead.jpg). Right click on your desktop and from the pop up select properties. You will see the following:

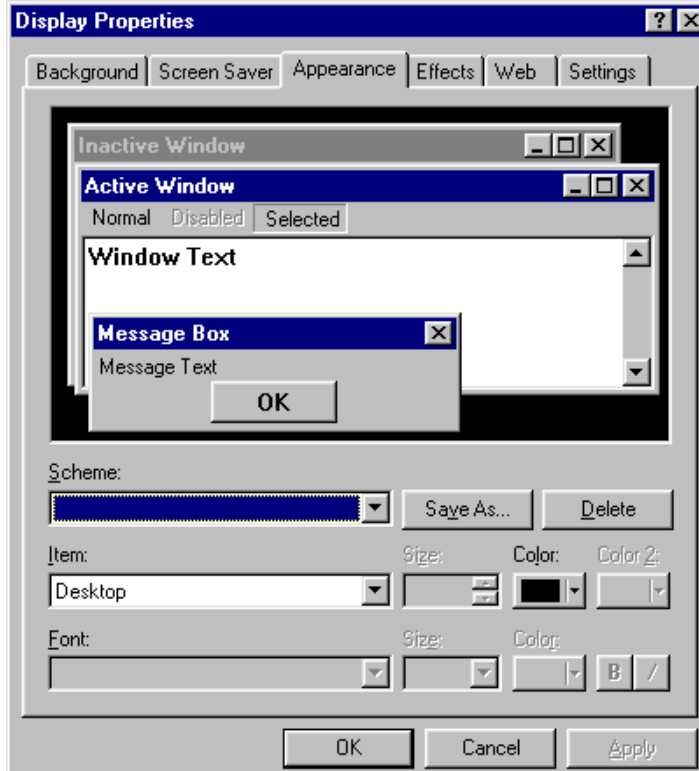


The Settings tab tells you the resolution of your screen and information about your screen area. Messing with the screen area will enlarge your desktop and the colours is the maximum displayed by your system, leave this alone

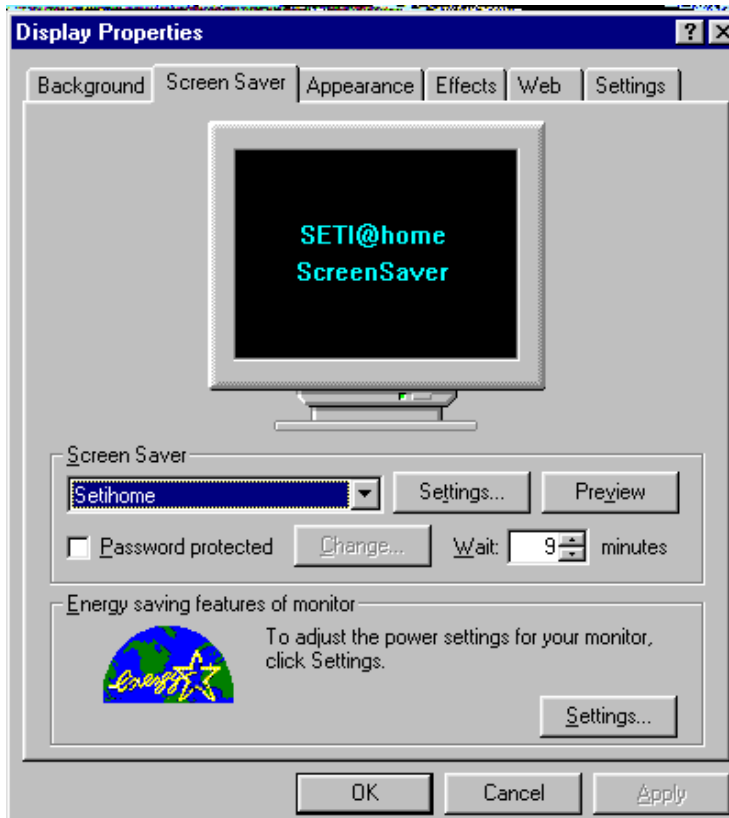


Have a look at the effects bar, you can see some of the icons I use, you can select these individually and change them at will. The default location for additional free icons / ones downloaded as a THEME is c:\program files\plus\themes
If when you click change icon the default location is not opened remember the one above.

Appearance, only change this when it is necessary, or you really want to wind someone up this is where you can set the colours for everything, florescent scrollbars are a sure sine of boredom or revenge.



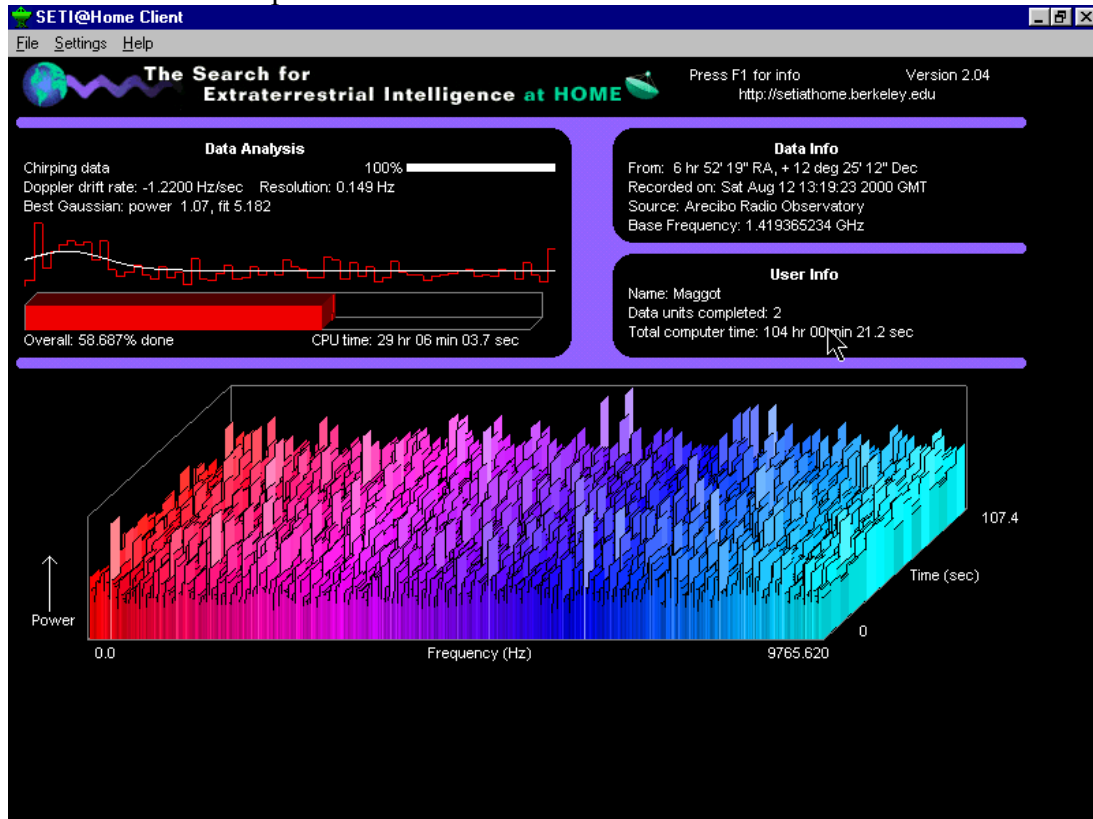
Screensaver



You can play with this one, the screensaver is really there to prevent the CRT in your monitor from burning out if you forget to turn off your PC. As you can see If I am not at my PC and it is on then it assists SETI processing the millions of hours of data they have in the quest for ET, no its for real

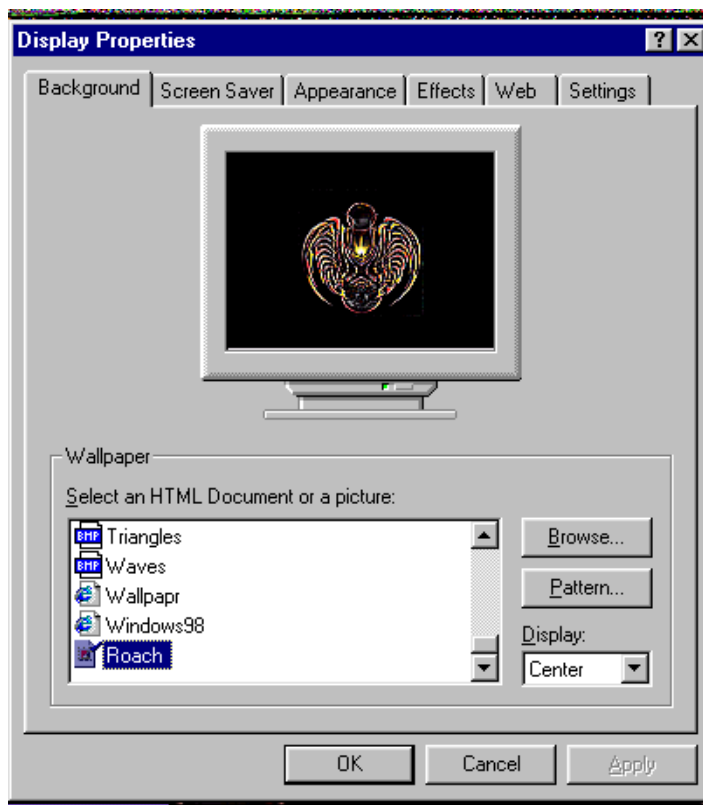
<http://setiathome.ssl.berkeley.edu>

Here is a screen scrape from the screensaver in action



Wallpaper changing

You may have seen this one when the pop up menu opened up, but before we started playing with this the most commonly used part of the control panel I thought I had better familiarise you with the other features available in the other fields. This is really straightforward to change to the eagle head click on browse and find the location of where you put it, once you have selected it click on centre then ok. The next time you see your desktop, assuming you did not stop to play with the icons you should have an eagle head



Your system may say you can only have this wall paper if Active desktop is on, do you want this Say Yes

Just in case here is the eagle, right click it and save it where you can find it



ps spot the difference!

Here is george the Roach



A combination of images.

The second way to change your wallpaper, is to right click an image on the web and use the set as wallpaper option from the pop up menu.

The long way to get into the menu is My computer / Control Panel / display

WARNING FROM THE WISE

Wallpapers although pleasing to the eye and beholders - occupy RAM, the thinking power of your computer. Large images detract from RAM and therefore slow down your computer, you may not notice it instantly but you will eventually.