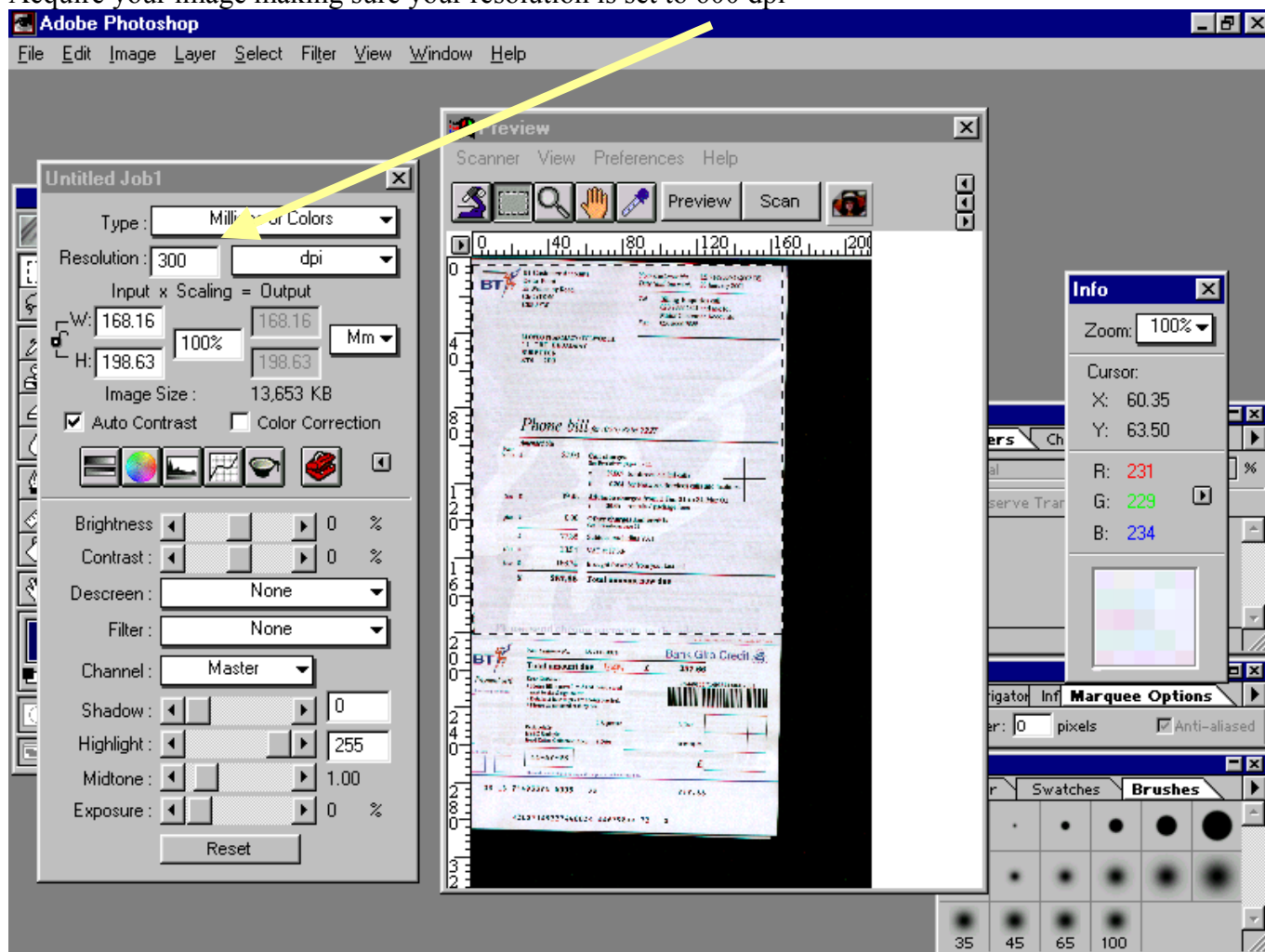


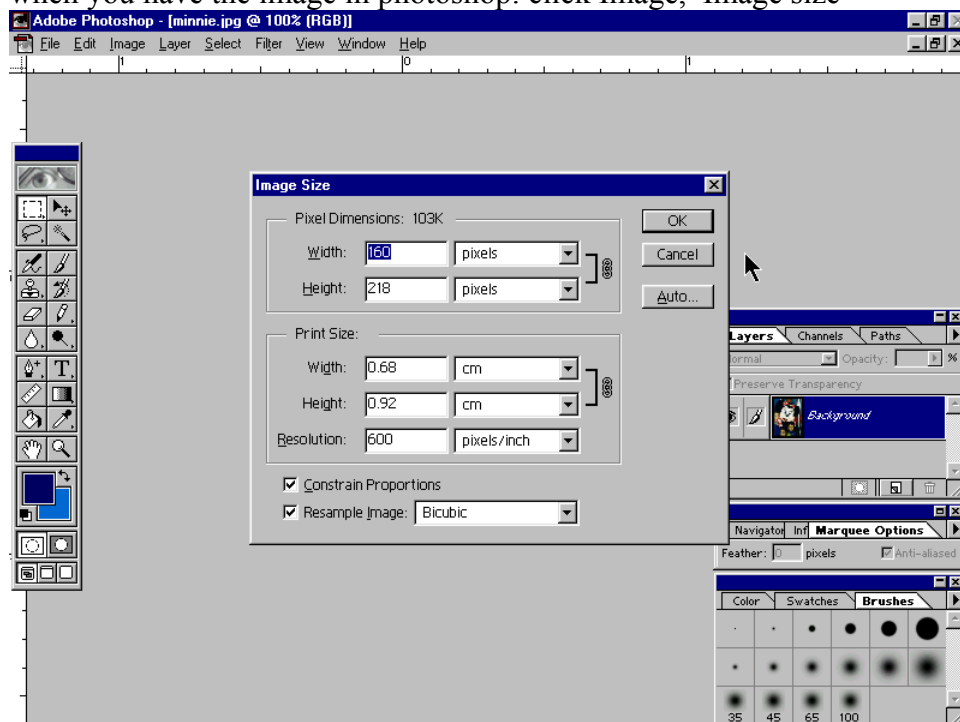
Scanning & saving High quality images in Photoshop 5.

Start Photoshop

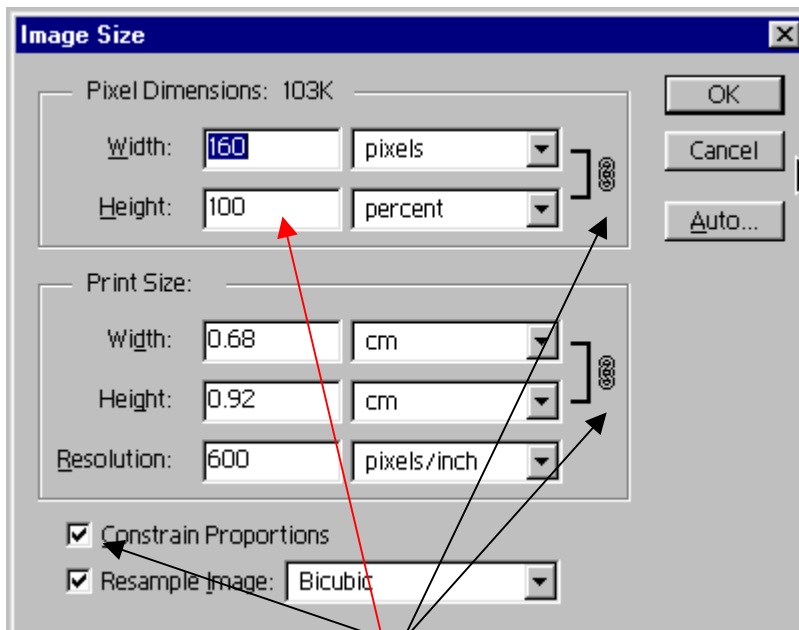
Acquire your image making sure your resolution is set to 600 dpi



when you have the image in photoshop: click Image, Image size



& you will see the above pop up box



Make sure the image is constrained then change either the height or width from pixels to percent then reduce the figure from 100 to 10 this will preserve the quality and reduce the file size dramatically. As you are dealing with slides for the majority of the time you may even be able to increase the resolution to 1200dpi, this will give superb quality images, the down side of all this is you need hard disk space for scanning, a single slide at 1200 dpi may take over 100mb of temporary space. Remember to save the image as a jpeg and set the jpeg options to maximum

